

# CASE CARTS / MEDICAL LOGISTICS

04

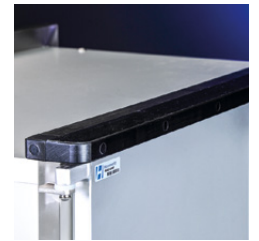


CASE CARTS RGAE - ALUMINIUM-STAINLESS STEEL [96-98](#)  
CLOSED MODULAR CASE CARTS RGAE FOR ISO TRAYS -  
ALUMINIUM-STAINLESS STEEL [99-100](#)  
CLOSED MODULAR CASE CARTS RGEE - STAINLESS STEEL [101](#)  
MODULAR PICKING TROLLEYS -  
ALUMINIUM-STAINLESS STEEL [102](#)  
CASE CART FOR STERILE GOODS -  
STERILE GOODS SHUTTLE SYSTEM  
SEE CHAPTER STERILE GOODS FROM PAGE 103

## CASE CARTS RGAE, ALUMINUM-STAINLESS STEEL



+ Stainless steel frame protects aluminum body



+ Polymer front bumper



+ Doors with central lock, lockable



+ Ergonomic push handles on both face sides of the unit



+ Rubber sealing around the door



+ Shelves hygienic spaced mounted



+ Magnet fixation of doors



+ Stainless steel carriage with wrap-around polymer bumper (PE)

### // SPECIAL EQUIPMENT

- + Upper wrap-around bumper for off-site transport by truck (PE, black)
- + Joint and hitch for linking units **KDRGAE**
- + Lowering set for door fixation at 270° **KDRRGAE**
- + Rubber sealing
- + Swivel caster with central brake
- + Swivel caster with directional lock
- + Casters with stainless steel housing
- + 2-point locking system
- + Central locking system



2-point locking system



Joint and hitch **KDRGAE**

! Case carts with adjustable shelves on request. More accessories see page 106!

## CASE CARTS RGAE ALUMINUM-STAINLESS STEEL



The cabinet cart series **RGAE** is used when conventional cabinet carts are not strong enough. The RGAE cabinet cart has proved its worth in tough everyday operation in major clinics.

### // SPECIAL FEATURES

- + **Stainless steel-square tubular frames**  
protect the aluminum carcass
- + **Rectangular compartments**  
are easy to clean and make the best use of space
- + **Double-welled doors**  
with sealing strip all round offer outstanding protection against dust
- + **Lockable as standard**

**Production according  
to customer requirements:**  
*„Sometimes you have a special idea  
or a special requirement... It's good to  
know there's always a perfect answer  
available. Special requirements we  
regard as standard.“*

## CASE CARTS RGAE, ALUMINUM-STAINLESS STEEL



### // TECHNICAL DESCRIPTION

- + Distortion-free reinforced stainless steel frame and carriage, casing made of anodized aluminum
- + Wrap-around polymer bumper and top front bumper (both made of PE) provide resistance and protection
- + Double-wall doors with rubber sealing all around and central lock
- + Doors can be opened at a radius of 270° and attached to the side walls by means of magnet when open
- + Ergonomic shrink-wrapped push handles on both depths of the unit
- + Two fixed and two swivel casters, elastic tire tread and precision ball bearing with dustguard, polyamide wheel body, caster housing: zinc-chromated
- + 1 or 2 non-removable shelves



RGAE 250 closed

*"Amazing Space!  
Our RGAE 250 excels in terms  
of its special depth!"*

OUTSIDE DIMENSIONS			SHELVES		HEIGHT OF COMPARTMENT			CASTER Ø mm	LOAD RATING kg	WEIGHT kg	ORDER CODE
WIDTH mm	DEPTH mm	HEIGHT mm	WIDTH mm	DEPTH mm	UPPER mm	CENTER mm	LOWER mm				
1195	649	1198	1050	550	460		400	160	130	58	RGAE 131
1195	649	1514	1050	550	376	340	380	200	150	70	RGAE 151
1195	649	1737	1050	550	440	440	440	200	200	75	RGAE 231
1433	744	1737	1290	645	440	440	440	200	250	107	RGAE 250

## CLOSED CASE CARTS FOR ISO TRAYS, RGAE ALUMINIUM STAINLESS STEEL



RGAE 310MTR

RGAE 320MTR

RGAE 330 MTR

Equipped with ISO trays and HPL shelves (optional)



RGAE 318MTRS



RGAE 322MTRS

### // INFO

**Tray support guiders MTRS6**  
Suitable for all common ISO trays as well as for various other containers in ISO 600 x 400 format, e.g. pharmacy containers.

**Slide with stop function,** used for Hammerlit trays including stoppers, as well as for trays with stoppers from other brands.  
Dimensions **RGAE 318MTRS** approx.: 1007 x 744 x 1545 mm (W x D x H)

*„Quality made of light metal!“*



+ Suitable for all common ISO-modules

+ Hygienic shaped interior

+ Pull-out protection when using stoppers

+ Pharmacy container

! These light metal case carts are designed for the transport of ISO trays (400 x 600 mm). Safe transport is ensured by U-profile guiders or, if required, with ABS support walls.

OUTSIDE DIMENSIONS				CAPACITY	CASTER Ø mm	DESIGN	ORDER CODE
WIDTH mm	DEPTH mm	HEIGHT mm					
590	731	1500	1 x 9 trays	600 x 400 x 100	125	with ABS side panels	RGAE 310MTR
1027	731	1545	2 x 9 trays	600 x 400 x 100	160	with ABS side panels	RGAE 320MTR
1462	786	1545	3 x 9 trays	600 x 400 x 100	160	with ABS side panels	RGAE 330MTR
1007	744	1545	2 x 9 trays	600 x 400 x 100	160	with ISO guiders MTRS6	RGAE 318MTRS
			2 x 8 trays plus 2 trays	600 x 400 x 200			
1007	744	1708	2 x 11 trays	600 x 400 x 100	160	with ISO guiders MTRS6	RGAE 322MTRS

## CLOSED CASE CART WITH STAINLESS STEEL U-GUIDERS FOR ISO TRAYS

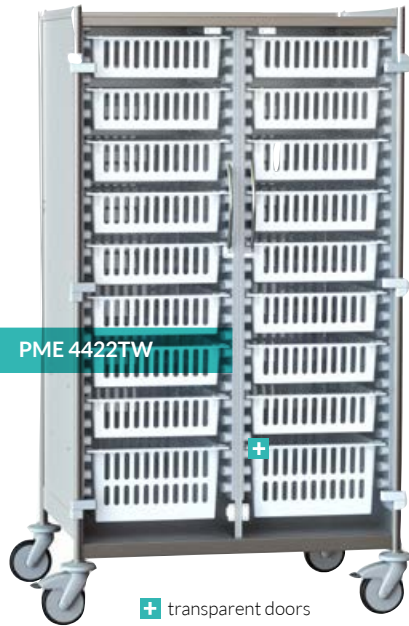


RGAE 320MFT



RGAE 320MFT

Modular-combi-case cart with ISO side panels and alu-shelves



PME 4422TW

+ transparent doors



RGAE 320ME

! Patient care carts PME-series, see chapter patient care from page 38.

! Description and other caster configurations, see page 106!

OUTSIDE DIMENSION			CAPACITY	CASTER Ø mm	DESIGN	ORDER CODE
WIDTH mm	DEPTH mm	HEIGHT mm				
1027	731	1545	3 Compartments+ 9 Modules	160	shelf fixed/side panel	RGAE 320MFT
1462	786	1545	3 Compartments+ 9 Modules	160	shelf fixed/side panel	RGAE 330MFT
1027	731	1545	3 Compartments+ 9 Modules	160	shelf height adj./side panel	RGAE 320MLT
1462	786	1545	3 Compartments+ 9 Modules	160	shelf height adj./side panel	RGAE 330MLT
1027	731	1545	2 x 10 Modules 600 x 400 x 100	160	with guiders	RGAE 320ME
1462	786	1545	3 x 10 Modules 600 x 400 x 100	160	with guiders	RGAE 330ME
980	729	1545	2 x 10 Modules 600 x 400 x 100	160	with side panels	PME 4422TW

## CLOSED CASE CART RGEE WITH STAINLESS STEEL U-GUIDERS FOR ISO TRAYS



RGEE310ME

### Single row design

- 10 pairs fixed stainless steel guiders

! RGEE310ME and RGEE320ME are optional also available with washing tunnel resistant guiders MTRS6 (see page 115)



RGEE320ME

### Double row design

- each row with 10 fixed stainless steel guiders
- allows the storage of 10 wire baskets or trays per row

! These case cart can also be offered as suitable for washing tunnels



RGEE330ME

### 3-row design

- 10 pairs of fixed stainless steel guiders per row

### Design:

#### 3-row design

- 10 pairs of fixed stainless steel guiders per row
- 2 swivel castors and 2 fixed castors
- Wheel diameter 160 mm
- Castor housing: sheet steel, galvanized-chromated
- Double-walled, reinforced hinged doors
- Doors with silicone seal to protect from dust and dirt by an all-round light gray
- Doors can be opened 270° and secured by magnets
- A 2-point rotation door lock, lockable
- All-around bumper made of solid PE, black
- per row 10 pairs of fixed stainless steel U-profile guiders

OUTSIDE DIMENSIONS			INSIDE DIMENSIONS			CAPACITY ISO MODULES 600 X 400 X 100 MM	ORDER CODE
WIDTH mm	DEPTH mm	HEIGHT mm	WIDTH mm	DEPTH mm	HEIGHT mm		
751	721	1512	515	640	1228	1 x 10	RGEE310ME
1171	721	1512	945	640	1228	2 x 10	RGEE320ME
1615	806	1512	1355	640	1228	3 x 10	RGEE330ME

## MODULAR PICKING TROLLEY, OPEN

- **single row**
- Dimensions: ca. 520 x 685 x 1580 mm (W x D x H)
- with 1 x 10 pairs of guiders incl. stop function, for carrying 10 ISO trays of 600 x 400 x 100 mm
- **Double row**
- Dimensions: ca. 965 x 685 x 1580 mm (W x D x H)
- with 2 x 10 pairs of guiders incl. stop function, for carrying 20 ISO trays of 600 x 400 x 100 mm



- Full welded frame made of stainless steel
- Fits all common ISO trays and other containers in an ISO format 600 x 400 (e.g. our WSNK or pharmacy containers)
- Including a stop function on both ends of the guider for safety during transport
- Also available as a washing tunnel resistant version
- 4 swivel castors, 2 of which have a total lock, wheel diameter 125 mm, tread: solid rubber, gray, non-marking

## MODULAR PICKING TROLLEY, LOW

- Dimensions: approx. 770 x 485 x 895 mm (W x D x H)
- including 5 pairs of MTRS guiders including stop function for carrying 5 ISO trays of 600 x 400 x 100 mm
- full welded frame made of stainless steel
- with push bar
- worktop made of HPL (removable)
- also available as a washing tunnel resistant version
- 4 swivel casters, 2 with double brake, Ø 75 mm light gray rubber profile, non-marking



■ for matching ISO trays see chapter Tray System ISO, from page 162.