



**TouchPoint™**  
**MEDICAL AccessPoint™**

## **AccessPoint™**

# **POINT OF CARE CARTS**

---

## **ILLUSTRATED PARTS CATALOG**

**Read The Descriptions Carefully To Ensure  
Desired Part Is Ordered For Replacement.**

**L01-571, Rev.H**  
**11/2016**



---

TouchPoint Medical  
114 Douglas Road East, Oldsmar, FL 34677  
For Product Information Call: 1-800-947-3901  
Visit Our Web Site: [www.touchpointmed.com](http://www.touchpointmed.com)

---

**Service Documentation -  
do not leave with customer**

# NOTICE

*TouchPoint Medical reserves the right to make improvements or changes to the products described in this catalog at any time without notice.*

*While reasonable efforts have been made in the preparation of this document to assure its accuracy, TouchPoint Medical assumes no liability resulting from any errors or omissions in this document, or from the use of the information contained herein.*

## **COPYRIGHT NOTICE:**

This manual is copyrighted. All rights reserved. This manual may be printed for personal use only. This manual, whole or in part, may not be copied, photocopied, reproduced, translated, or reduced to any electronic medium or machine-readable form for distribution. This manual, whole or in part, may not be modified without prior consent, in writing, from TouchPoint Medical.

TouchPoint Medical, 114 Douglas Road East, Oldsmar, FL 34677.

## **PLEASE NOTE:**

This illustrated parts catalog is issued on condition that it is used only for the disassembly/assembly, identification of replacement parts in AccessPoint Mobile Workstations and is **NOT** disclosed to third parties except with the consent of TouchPoint Medical.

## **PUBLISHED AS:**

Document No: L01-571

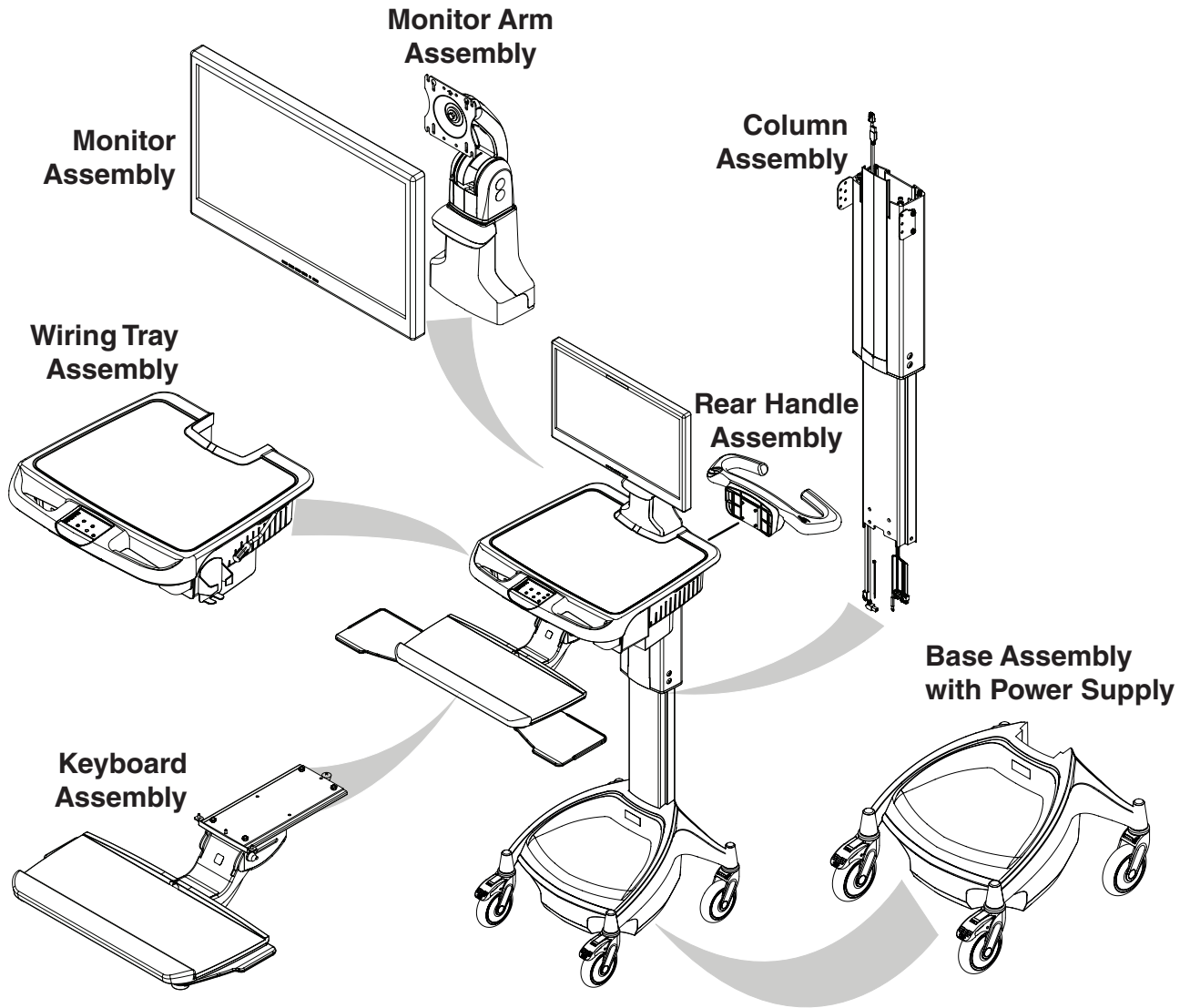
## REVISION HISTORY

Rev./Issue	Revision Description	Date	Approved By
Rev A	Initial Release	02/23/2014	Chris Radvanyi
Rev B	Update CRN action items. List of CRNs: 14-079, 14-129, 14-106, 14-123, 14-125, 14-179, 14-234, 14-229, 14-258, 14-284, 14-314	11/27/2014	Chris Radvanyi
RevC	1) Updated IPC with Simplifying Figure/Index No, 2) Part Number is replaced with Reference Number, 3) RP Kit Number replaced with "orderable/saleable" items along with RP kit part numbers, 4) Included complete description of RP Kit 5) Changed the logical sequence of Index No. in all BOMs and Figures 6) CRN 14-321 action items to update tech tray BOMs and Figures 7) CRN 15-005 action items to update power supply part number in Page24	01/29/2015	Dave Reppert
RevD	1) Changed Layout of Part References. 2) Booked new commodity code L01-571 for AccessPoint IPC internal document (only for internal circulation). 3) RevD becomes the initial release for L01-571 4) CRN 15-048 action item to add terminal block cover and change in hardware. 5) CRN 15-070 action item to replace F06-046* with F06-021 in the bottom column assembly. 6) CRN 15-027 action item to add F04-555 (x2) in E-lifter BOM. RN 15-066 action item to update DWG# 28526 (C09-915) 7) CRN 15-082 action item to update base screws CC number	04/29/2015	Dave Reppert
RevE	1) CRN 15-101, 15-093 action items to update BOMs 2) CRN 15-112 action item to update C13-885-04 in page25 3) CRN 15-138: Obsolete old release cable part number is C11-845 (Han manufacturer), with New release cable part number is C11-877 (Bansbach Manufacturer) 4) CRN 15-114 action item to update fastener details in page 10-11 of RPAP-PRINTERCOVER. 5) CRN 15-045 update 8ft/12ft AC Power Cords part numbers in page29 6) BOM and Part changes as per action items of CRN 15-094, 15-111, 15-123, 15-129, 15-138, 15-157, 15-156	08/04/2015	Dave Reppert
RevF	1) CRN 15-189 action item to update keyboard BOM updation. 2) CRN 15-194, CRN 15-161 action items 3) Removed Emerson logo from this Catalog 4) CRN 15-271 action item to update 404109 in page25. CRN 15-319 action item to add velcro 606877-4 (qty-5) in pages8-9. CRN 15-326 action item to obsolete RP kit part numbers. CRN 15-334 action item to replace C09-935 with C09-1132 in page21. CRN 15-246 action item to replace F07-147 with F07-175 in page19. 5) CRN 15-228 action item to update BOM of RPMONITORHW in page7. CRN 15-328 action item to update face plate part number in pages 10-13. CRN 16-023 action item to update velcro & quick terminal in page 13. CRN 16-050 action item to obsolete LIFE battery option from page26-27.	03/08/2016	Dave Reppert
RevG	1) Changed black to Orange Lever Knob in page15. 2) CRN 16-051 action item: replace C11-877 with C11-910 in pages 15, 22 3) RPAP-KEYBOARDARM and RPAP-KEYBOARDTRAY are being replaced by RPAP-KEYBOARDARM-ERGO and RPAP-KEYBOARDTRAY-ERGO in page 19. 4) RPAP-KEYBOARDARM-S and RPAP-KEYBOARDTRAY-S are included in page19. 5) CRN 15-323 action item to update monitor arm part number in page7. 6) CRN 16-031 and 15-322 action items are updated in current IPC. 7) Included Easylift Gas Spring RP kits in pages 20-21. Removed "RPAP-CABLEGUARDBRKT" from pages 20-21. 7) CRN 16-021 action item updated in pages 18-19. 8) CRN-143551 action item to update pages 12-13 for changing the quantity of 90010206 to 4. 9) CRN-150909: update J-19 with F04-557 in page 22. 10) CRN-150795 action item to update blue caster details. 11) CRN 15-324 action item to include AP Vesa Cover RP kit details in page6. 12) CRN 16-027 action item to update page 16. 13) CRN 156311 action item to add Hardware kit to Monitor Arm assembly. 14) CRN 159099 action items to update new design of lock bar, tilting techtray.	07/05/2016	Paul Prickett
Rev H	1) Metro Label, Address Replace with TouchPoint Medical Label and Address. 2) CRN 175600 action item updated in pages 8, 9, and17. 3) CRN 181462 action item: replace C13-969 with C13-1231 in page 13.	11/18/2016	Bradley Carlson

# TABLE OF CONTENTS

REVISION HISTORY .....	3
FUNCTIONAL BREAKDOWN OF BASIC AccessPoint CART.....	5
A. MONITOR ARM ASSEMBLY.....	6
<i>A. Monitor Arm Assembly Part Reference.....</i>	<i>7</i>
B: WORKSURFACE ASSEMBLY .....	8
<i>B: Work Surface Assembly Part Reference .....</i>	<i>8</i>
C: WORKSURFACE ASSEMBLY (LAPTOP).....	9
<i>C: Laptop Work Surface Assembly Part Reference .....</i>	<i>9</i>
D. TECH TRAY ASSEMBLY (EXTERIOR) .....	10
<i>D. Tech Tray Assembly Exterior Part Reference .....</i>	<i>11</i>
E. TECH TRAY ASSEMBLY (INTERIOR).....	12
<i>E. Tech Tray Assembly Interior Part Reference.....</i>	<i>13</i>
F & G: LIFTER HANDLE AND LOCKBAR ASSEMBLY .....	14
<i>F &amp; G. Lifter Handle and Lock Bar Assembly Part Reference.....</i>	<i>15</i>
H. KEYPAD ASSEMBLY .....	16
<i>H. Keypad Assembly Part Reference.....</i>	<i>17</i>
I. KEYBOARD TRAY ASSEMBLY.....	18
<i>I. Keyboard Tray Assembly Part Reference .....</i>	<i>19</i>
J. COLUMN ASSEMBLY.....	20
<i>J. Column Assembly Part Reference .....</i>	<i>21</i>
K. REAR HANDLE ASSEMBLY (ACCESSORY) .....	23
<i>K: Rear Handle Assembly Part Reference .....</i>	<i>23</i>
L. BASE ASSEMBLY.....	24
<i>L. Base Assembly Part Reference .....</i>	<i>25</i>
M. BATTERY ASSEMBLY.....	26
<i>M. Battery Assembly Part Reference .....</i>	<i>27</i>
OTHER REPLACEMENT PARTS .....	28
CUSTOMER SERVICE .....	30

# FUNCTIONAL BREAKDOWN OF BASIC AccessPoint CART



# A. MONITOR ARM ASSEMBLY

Refer to Pages 6-7 for Replacement Part Numbers, Descriptions and Quantities

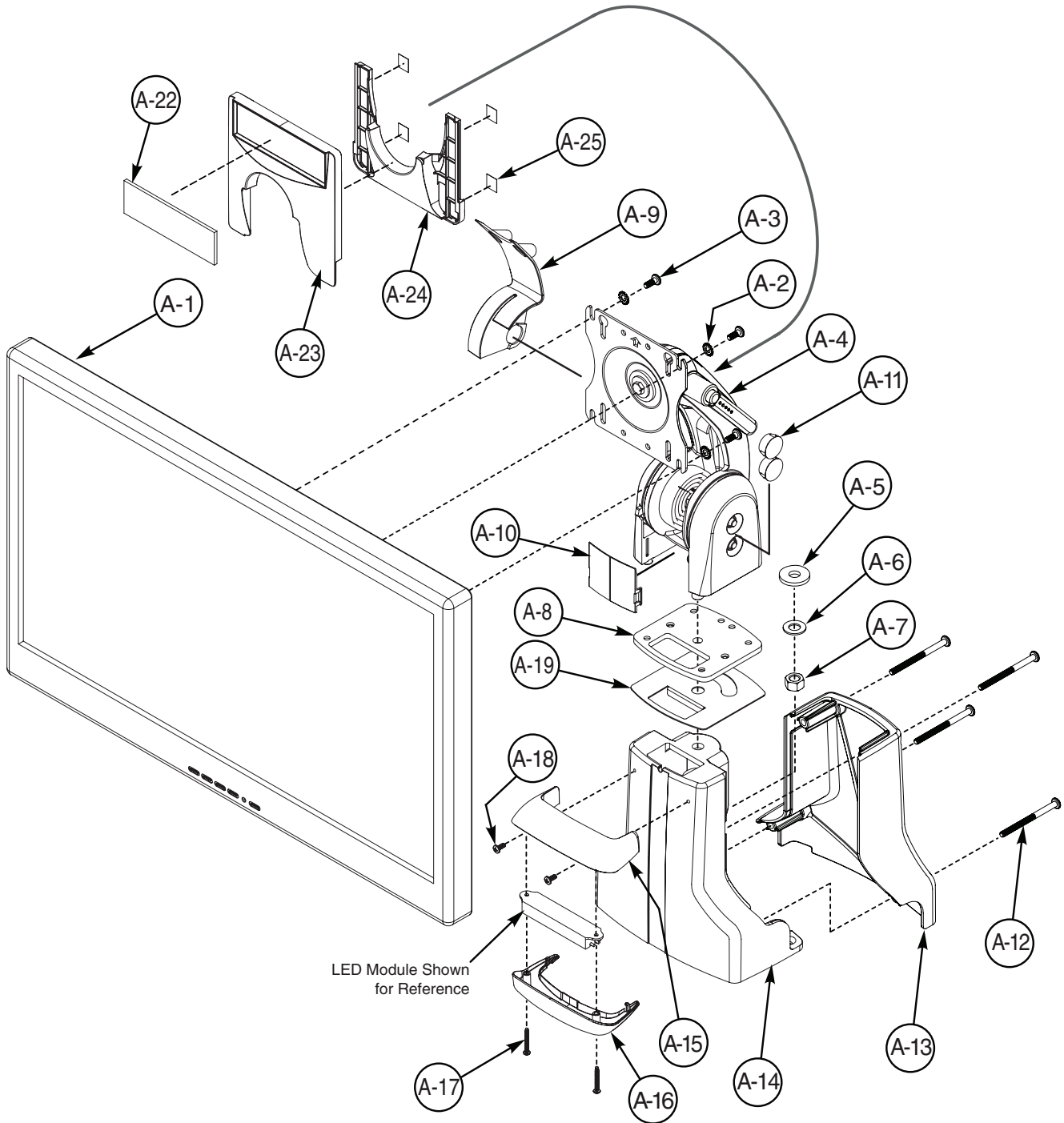


FIGURE A: MONITOR ARM ASSEMBLY

## A. Monitor Arm Assembly Part Reference

RPMON-xxxx: Replacement Monitor\*

Index #	Description	Quantity	Reference No.
A-1	Monitor	1	---

**RPMONITORHW: Replacement Monitor Hardware\*\***

Index #	Description	Quantity	Reference No.
A-2	Washer, LET, 8, RoHS	4	90004408
A-3	Screw PPH, M4 x .7 x 12mm, RoHS	4	900052M412
A-3	Screw PPH, M4 x .7 x 14mm, RoHS	4	900052M414
A-3	Screw PPH, M4 x .7 x 16mm, RoHS	4	900052M416
A-3	Screw PPH, M4 x .7 x 20mm, RoHS	4	900052M420
A-3	Screw PPH, M4 x .7 x 8mm, RoHS	4	900052M408
A-21	AccessPoint Monitor Screw Selection Guidelines (not shown)	1	L01-595

**RPAP-MONITORARM: Replacement Monitor Arm**

Index #	Description	Quantity	Reference No.
A-4	Monitor Arm with Lever	1	C21-278
A-5	Washer Supplied with Monitor Arm	1	
A-6	Washer Supplied with Monitor Arm	1	
A-7	Nut Supplied with Monitor Arm	1	
A-8	Base Plate Bearing	1	
---	Replacement Monitor Hardware (Refer table above)	1 Bag	RPMONITORHW

**RPAP-MONITORCAPS: Replacement Monitor Arm Caps**

Index #	Description	Quantity	Reference No.
A-9	Front Cable Cover	1	C11-858
A-10	Cable Manager/Cover	1	
A-11	Monitor Caps	6	

**RPAP-UNIONCOVER: Replacement Union Cover**

Index #	Description	Quantity	Reference No.
A-12	PPH Screw 10-24 x 2.500	4	F04-508
A-13	Union Cover	1	AP-UNIONCOVER

**RPAP-LED-WORKSURFACE: Replacement LED Assembly**

Index #	Description	Quantity	Reference No.
A-15	Desk Light Housing	1	AP-DESKLIGHTHOUSING
A-16	Desk Light Lens	1	AP-DESKLIGHTLENS
A-17	#4-20 x 7/8 Phillips Pan 48-2 Plastite Steel Screw	2	F04-529
A-18	PPM Screw 6-32 x .3125, RoHS	2	F04-379
A-20	LED Long Wire Harness (not shown)	1	C13-900B

**RPAP-VESACOVER: Replacement Vesa Cover Assembly**

Index #	Description	Quantity	Reference No.
A-22	Acrylic Mirror Sheet	1	C05-1192
A-23	Top Vesa Cover	1	C06-1195
A-24	Lower Vesa Cover	1	C06-1196
A-25	VHB TAPE 3MF9473PC 1/2" X 60YR	0.049 YR	401002-1
Index #	Description	Quantity	Reference No.
A-14	Union Structure	1	C03-036
A-19	Monitor Arm Spacer Bracket	1	C09-972

\* Monitor may vary based on configuration. Refer to page 28 for list of available models.

*\*\* Hardware may vary based on monitor. Refer to the manufacturer's user manual for details.*



## B: WORKSURFACE ASSEMBLY

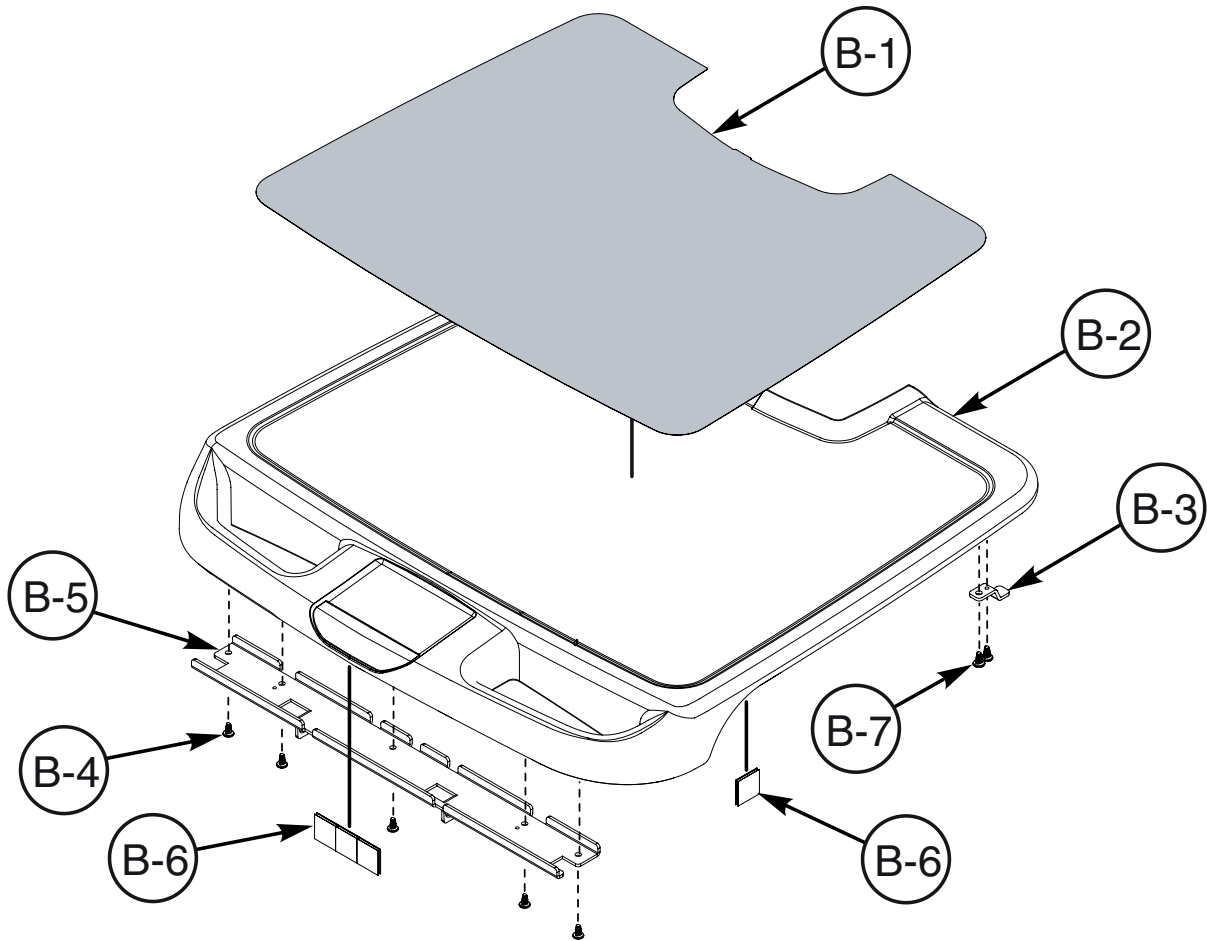


FIGURE B: WORKSURFACE ASSEMBLY

### *B: Work Surface Assembly Part Reference*

#### RPAP-WORKSURFACE: Replacement Worksurface

Index #	Description	Quantity	Reference No.
B-1	Worksurface Inlay	1	C05-1218
B-2	Worksurface	1	AP-WORKSURFACE
B-3	Worksurface Lock Tab	2	C09-1130
B-4	PPH Plastite Screw 10 x .375	5	F04-501
B-5	Worksurface Hold Down Bracket, Large	1	C09-1140
B-6	1"x1" Velcro Loop	5	606877-4
B-7	10-14 x 3/4" Flat Head Phillips Drive Screw	4	F04-587

#### RPAP-INLAY: Replacement Worksurface Inlay

Index #	Description	Quantity	Reference No.
B-1	Worksurface Inlay	1	C05-1218

## C: WORKSURFACE ASSEMBLY (LAPTOP)

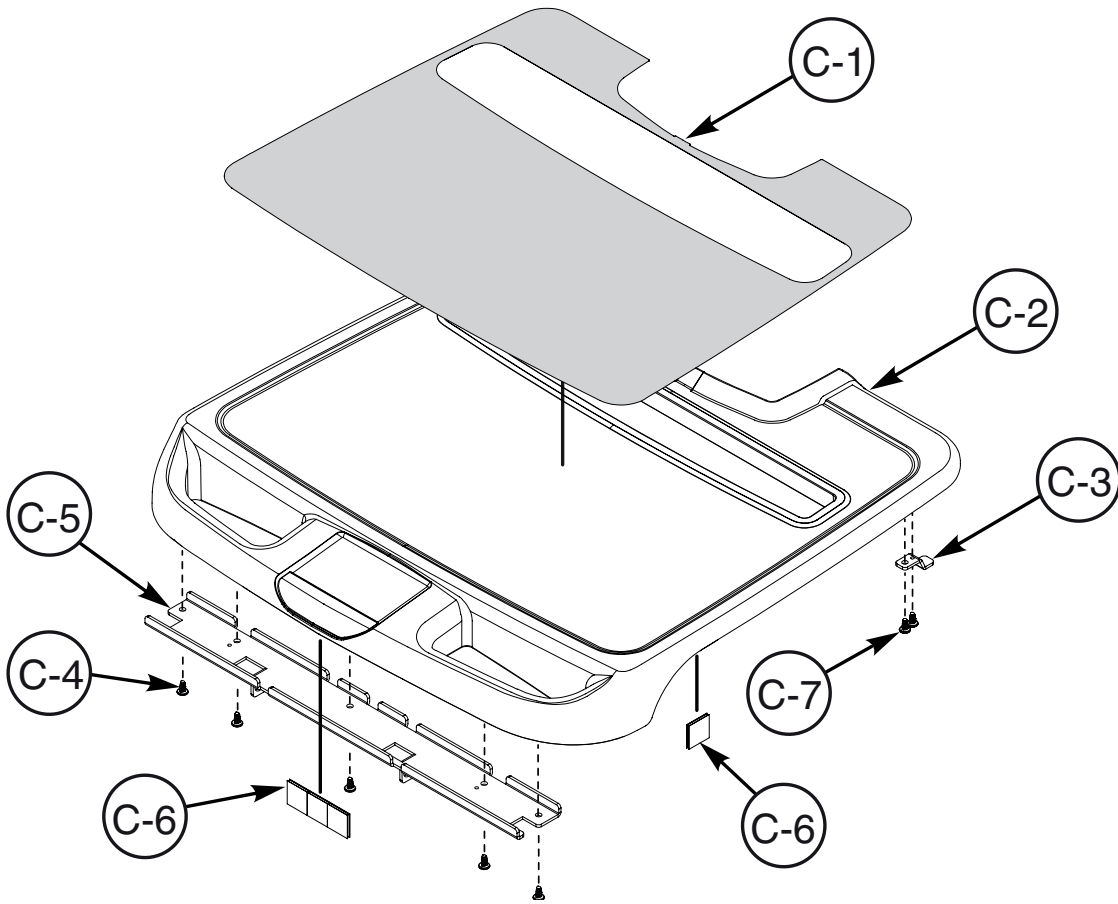


FIGURE C: LAPTOP WORKSURFACE ASSEMBLY

### C: Laptop Work Surface Assembly Part Reference

#### RPAP-LTWORKSURFACE: Replacement Laptop Worksurface

Index #	Description	Quantity	Reference No.
C-1	Laptop Worksurface Inlay	1	C05-1217
C-2	Laptop Worksurface	1	AP-LAPTOPSURFACE
C-3	Worksurface Lock Tab	2	C09-1130
C-4	PPH Plastite Screw 10 x .375	5	F04-501
C-5	Worksurface Hold Down Bracket, Large	1	C09-1140
C-6	1"x1" Velcro Loop	5	606877-4
C-7	10-14 x 3/4" Flat Head Phillips Drive Screw	4	F04-587

#### RPAP-LTINLAY: Replacement Laptop Worksurface Inlay

Index #	Description	Quantity	Reference No.
C-1	Laptop Worksurface Inlay	1	C05-1217

## D. TECH TRAY ASSEMBLY (EXTERIOR)

Refer to Page 11 for Replacement Part Numbers, Descriptions and Quantities

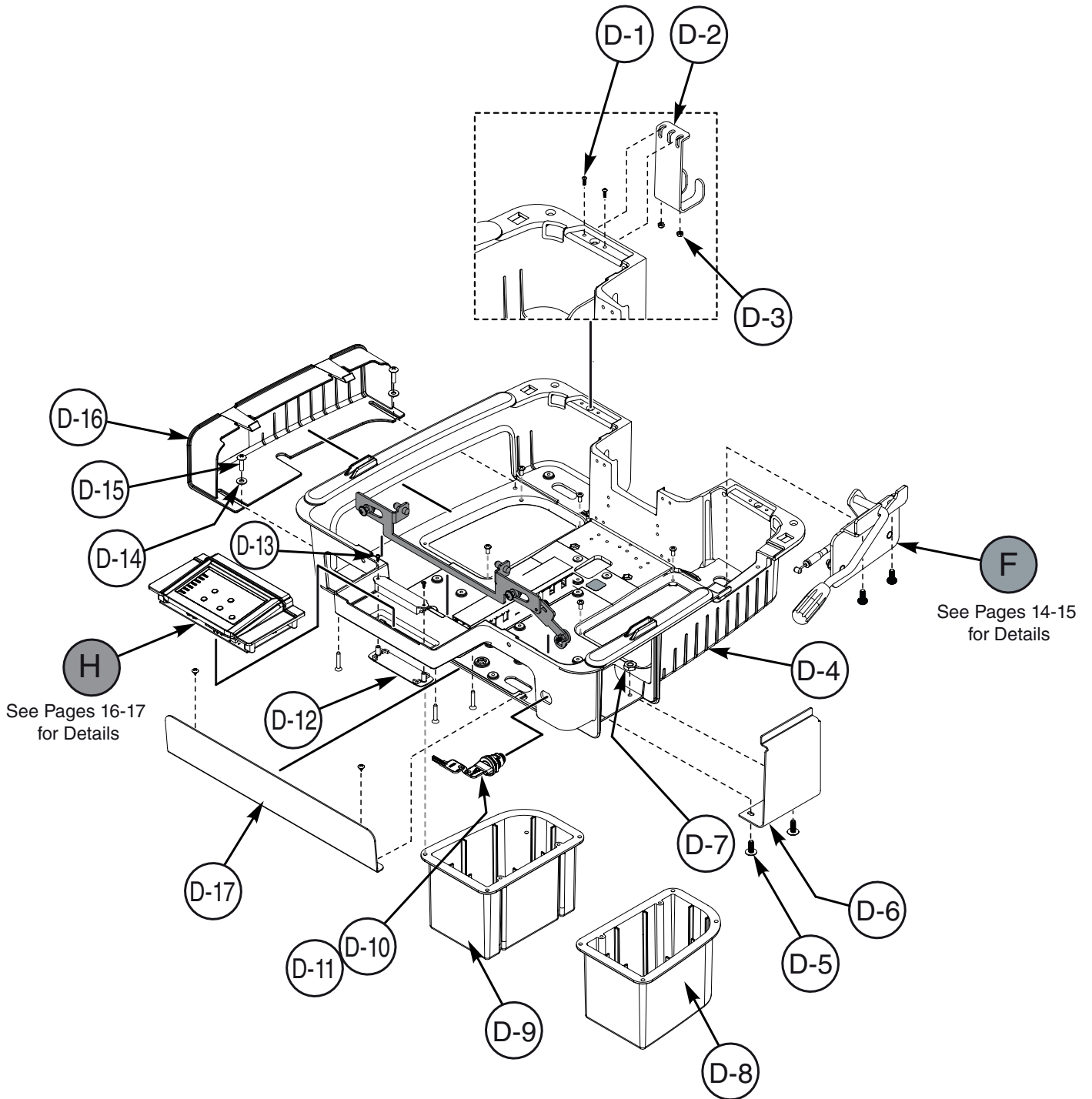


FIGURE D: WIRING TRAY ASSEMBLY - EXTERIOR

## D. Tech Tray Assembly Exterior Part Reference

### RPAP-CORDHANGER: Replacement Cord Hanger Bracket

Index #	Description	Quantity	Reference No.
D-1	#4-40 x 3/8 Button Socket Head Screw	2	F04-521
D-2	AC Cord Holder Bracket	1	C09-957
D-3	#4-40 Nylok Nut	2	F02-133

### RPAP-PRINTERCOVER: Replacement Printer Cover Kit

Index #	Description	Quantity	Reference No.
D-5	#10-24 x 1/2 PH Truss Head Screw	2	F04-246
D-6	Printer Blank	1	C09-832
D-7	10-24 Hex Nylon Lock Nut	2	F02-041*

### RPAP-SLIDERBAY: Replacement Expandable Tech Bay

Index #	Description	Quantity	Reference No.
D-14	#10 Zinc Flat Washer	2	F06-067
D-15	#12-24x1/2" Phillips Pan Head Screw	2	F04-588
D-16	Tech Tray Side Expansion Cover	1	AP-SIDESLIDE

### RPCORE-M392: Replacement Lock Core and Keys

Index #	Description	Quantity	Reference No.
D-10	Thumb Turn Style Core With Two Keys	1	C14-M392
D-11	Lock Housing	1	C14-077

Index #	Description	Quantity	Reference No.
D-4	Tech Tray Casting	1	C03-037
D-8	POD Right	1	AP-PODRIGHT
D-9	POD Left	1	AP-PODLEFT
D-12	LED Lens	1	AP-LEDLENS
D-13	PPM 4-40 x .3125 Screw (ROHS)	2	F04-378
D-17	Tech Tray Casting Front Cover	1	AP-FACEPLATE
F	Lifter Handle Assembly	---	AP-RELEASEHANDLEASSM
H	Keypad Assembly (Manual Lifter)	---	AP-KEYPADASSM
	Keypad Assembly (E-Lifter)	---	AP-KEYPADASSMLIFT
	Keypad Assembly (Laptop)	---	AP-LAPTOPKEYPADASS

# E. TECH TRAY ASSEMBLY (INTERIOR)

Refer to Page 13 for Replacement Part Numbers, Descriptions and Quantities

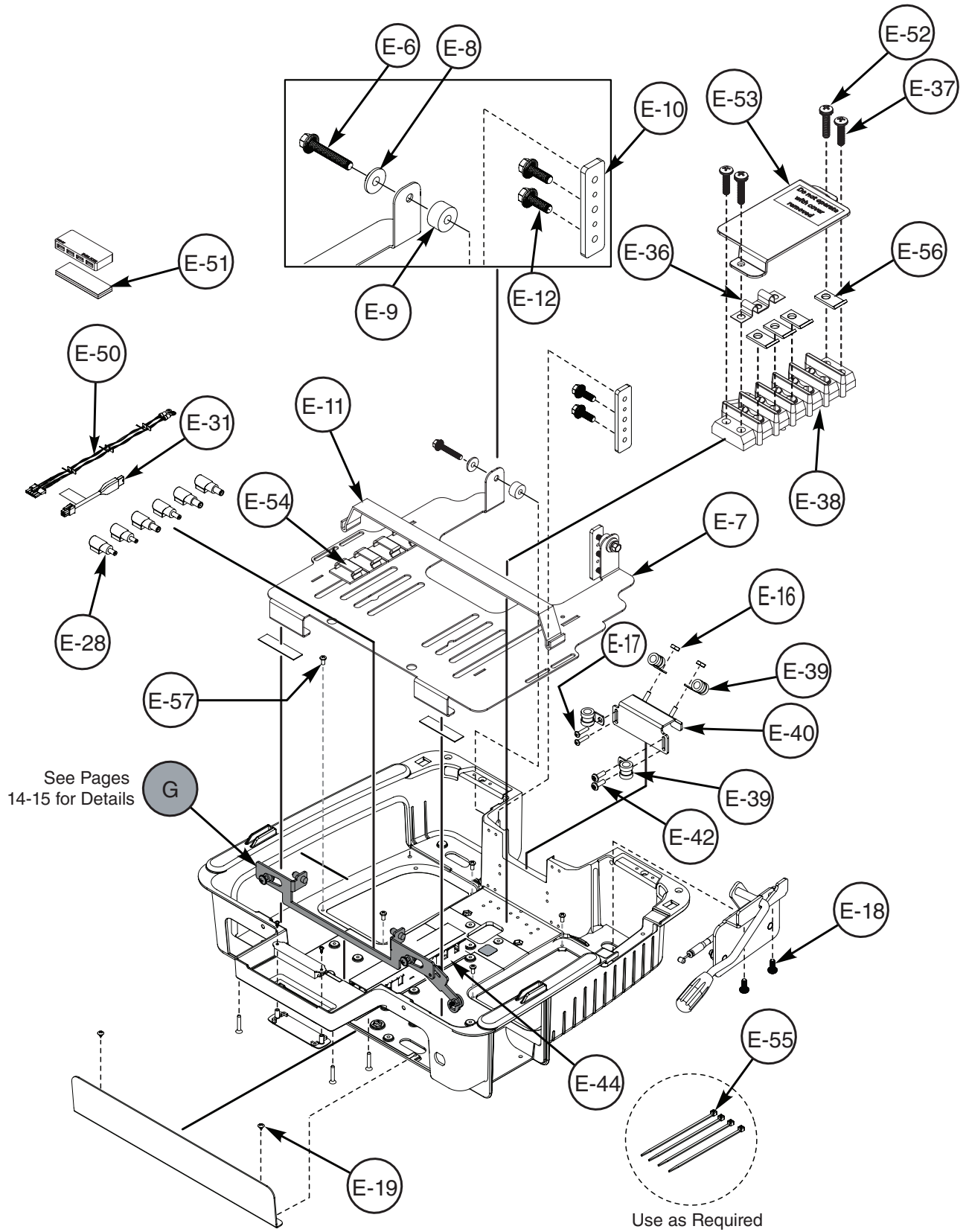


FIGURE E: WIRING TRAY ASSEMBLY - INTERIOR

## E. Tech Tray Assembly Interior Part Reference

### RPAP-TILTINGTRAY: Replacement Tilting Tray

Index #	Description	Quantity	Reference No.
E-6	1/4-20 x 1.5 Hexagonal Head Cap Screw	2	F04-532
E-7	Tilting Tray	1	C09-1148
E-8	Nylon Shoulder Washer	2	C06-1145
E-9	Nylon Spacer (.266 ID X .750 OD X .417 THK)	2	C06-1144
E-10	Tilting Tray Bracket	2	C09-1090
E-11	VELCRO Strap, 36" Long	1	36078
E-12	1/4-20 x.75 Screw (RoHS)	4	9000061412

### RPAP-TECHTRAYHW: Replacement Tech Tray Hardware

Index #	Description	Quantity	Reference No.
E-16	10-24 Hex Nylon Lock Nut	2	F02-041*
E-17	8x.375 Long Phillips Pan Head Screw	2	F04-030A
E-18	#10-32 x 1/2 Phillips Pan Sems Screw (RoHS)	2	F04-385
E-19	#8-32 x 5/16" Long Phillips Pan Head Thread Cutting Screw	2	F04-537
E-6	1/4-20 x 1.5 Hexagonal Head Cap Screw	2	F04-532
E-8	Nylon Shoulder Washer	2	C06-1145
E-9	Nylon Spacer (.266 ID X .750 OD X .417 THK)	2	C06-1144
D-14	#10 Zinc Flat Washer	2	F06-067
D-15	10-24 x .750 PH Truss Head Screw	2	F04-353
D-57	#8-32 x 3/8 Phillips Pan Head Machine Screw	7	F04-567

### RPAP-POWERTIPKIT: Replacement Power Tip Kit

Index #	Description	Quantity	Reference No.
E-28	Power Tip Kit	1	C13-1231

Index #	Description	Quantity	Reference No.
E-31	Computer Power Cable to Interface Board Wire Harness	1	C13-897
E-36	Jumper Wire Clamp	1	C13-942
E-37	8-32 x 5/8 Phillips Pan Screw (RoHS)	2	F04-384
E-38	Barrier Terminal Block, 5 Terminals .563	1	C13-943
E-39	.375 Steel Clamp STL (RoHS)	4	90010206
E-40	Wire Guide & P-Clip Mounting Bracket Fastener Assembly	1	C09-866
E-42	8x0.50 Long Phillips Pan Head Screw	2	F04-269
E-44	1.2 x 1.4" Open Slot Wire Duct (7" Long)	1	C06-1107
E-50	POC Control Pad Board, Input Power	1	C13-899
E-51	1" x 2" Velcro	3	606877-3
E-52	8-32 x .75" Phillips Pan Head Screw	2	F04-556
E-53	Terminal Block Cover	1	AP-TRMNLCOVER
E-54	Cable Clamp Panduit	4	36005-1
E-55	4" Nylon Cable Tie (RoHS)	10	90010104
E-56	Quick Connect Terminal	4	C13-1170
G	Lockbar Assembly	---	AP-LOCKBARASSMPH

# F & G: LIFTER HANDLE AND LOCKBAR ASSEMBLY

Refer to Page 15 for Replacement Part Numbers, Descriptions and Quantities

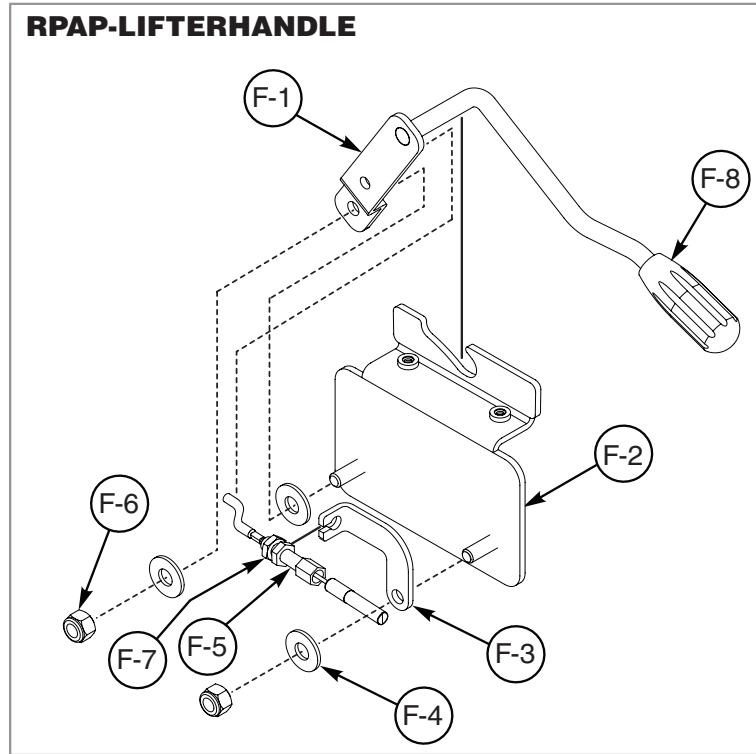


FIGURE F: LIFTER HANDLE ASSEMBLY

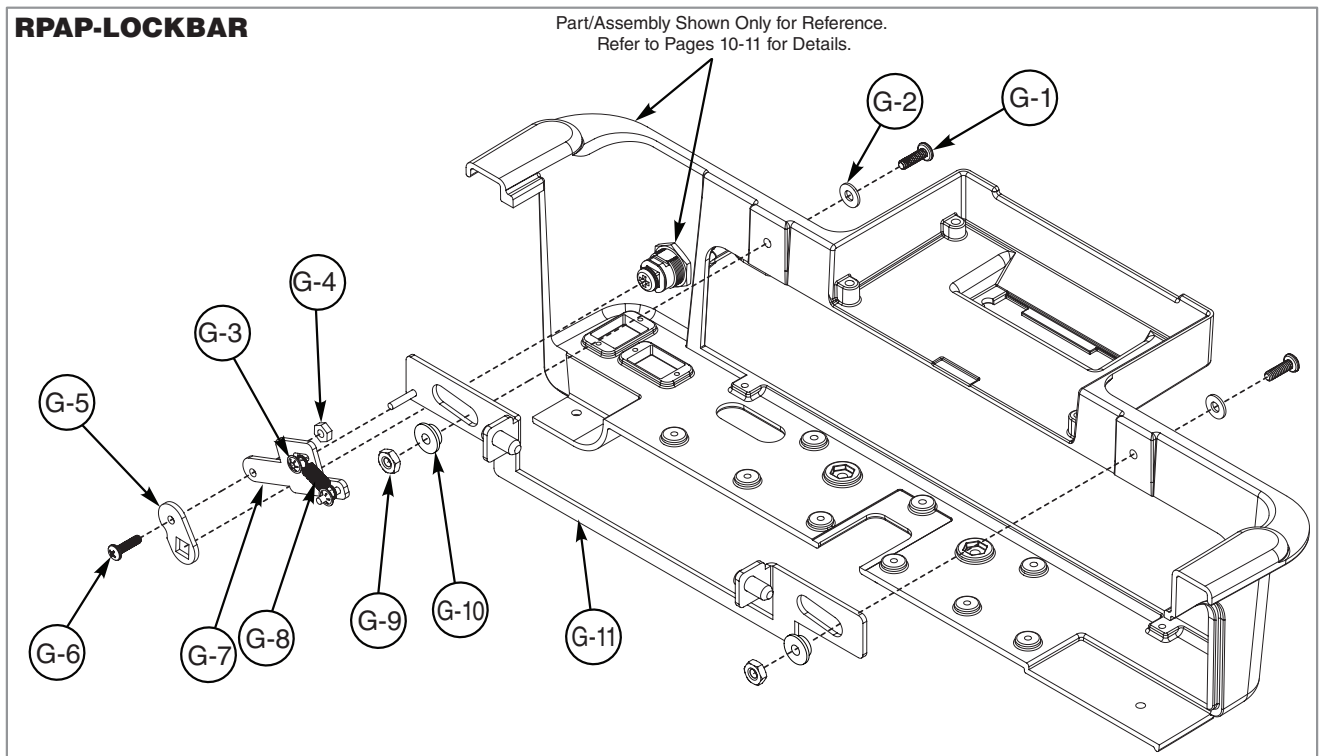


FIGURE G: LOCK BAR ASSEMBLY

## *F & G. Lifter Handle and Lock Bar Assembly Part Reference*

### **RPAP-LIFTERHANDLE: Replacement Lifter Handle for Manual Lifter**

Index #	Description	Quantity	Reference No.
F-1	Handle and Pivot Bracket Assembly	1	C09-915
F-2	Gas Spring Release Bracket	1	C09-1131
F-3	Cable Support	1	C09-919
F-4	.250 Flat Washer .312 ID x .734 OD x.065 Thick	3	F06-056
F-5	Release Cable Assembly, 750mm	1	C11-910
F-6	.250-20 Self Lock Elastic Stop Nut	2	F02-018
F-7	M6 x 1.0 Hexagonal Steel Jam Nut	1	F02-138
F-8	Orange Lever Knob	1	C06-1201

### **RPAP-LIFTERCABLE: Replacement Manual Lifter Cable**

Index #	Description	Quantity	Reference No.
F-5	Release Cable Assembly, 750mm	1	C11-910
F-7	M6 x 1.0 Hexagonal Steel Jam Nut	1	F02-138

### **RPAP-LOCKBAR: Replacement Lockbar Assembly**

Index #	Description	Quantity	Reference No.
G-1	10-24 x .625 Phillips PAN Screw with Nylon Patch	2	F04-302
G-2	#10 Flat Washer	2	F06-067
G-3	Push Nut for Ø.125 Wire	2	F02-137
G-4	#8-32 Elastic Lock Nut	1	F02-084
G-5	Cam Lock, Tech Tray Lockbar	1	C09-916
G-6	PPH 8-32 x .625 Screw	1	F04-384
G-7	Actuator and Stud Bracket	1	C09-918
G-8	Lock Bar Extension Spring	1	C11-044
G-9	10-24 HEX Nylon Lock Nut	2	F02-041*
G-10	.220ID x .435OD Shoulder Washer	2	F06-108
G-11	Lockbar and Stud Assembly	1	C09-1141



# H. KEYPAD ASSEMBLY

Refer to Page 17 for Replacement Part Numbers, Descriptions and Quantities

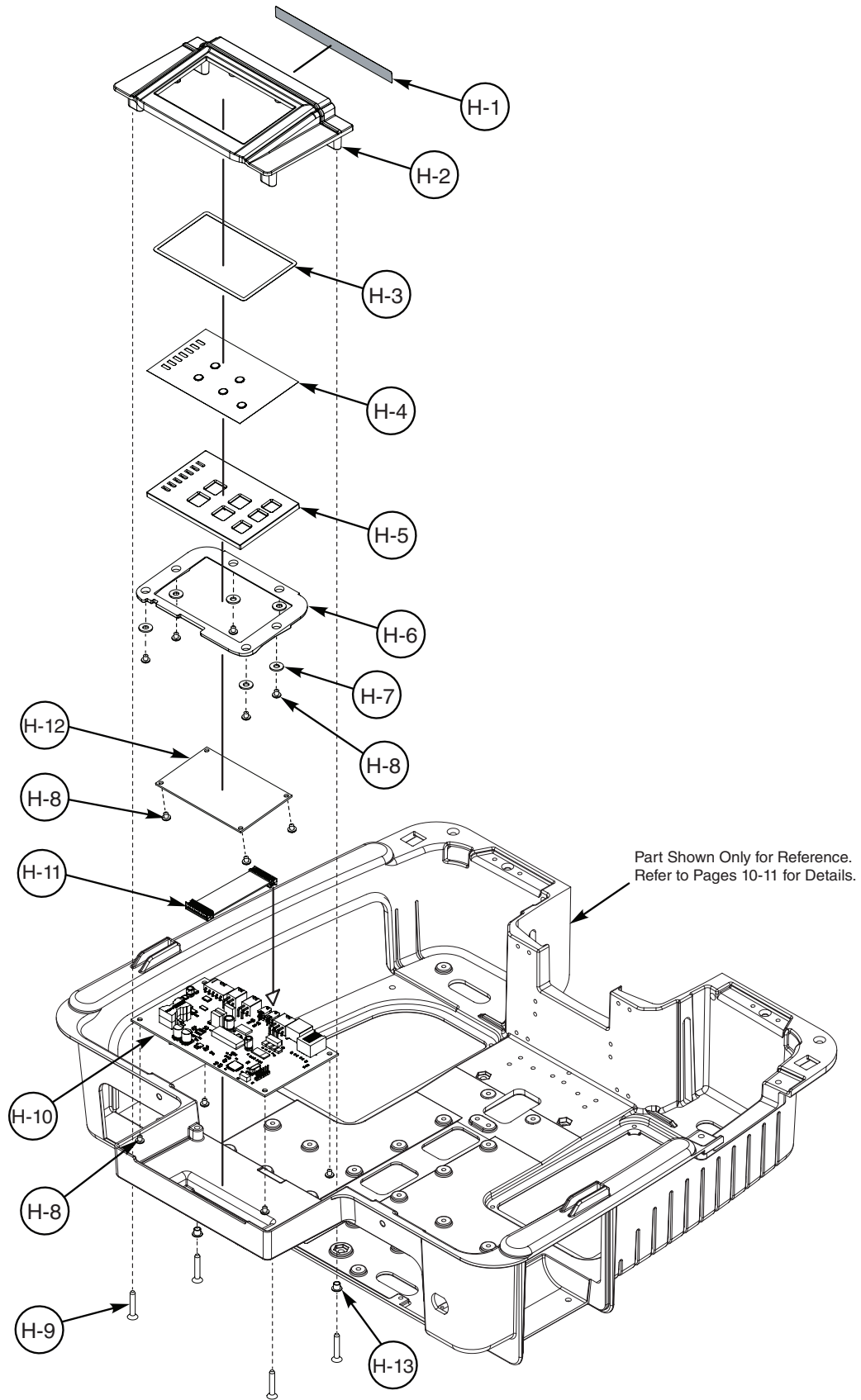


FIGURE H: KEYPAD ASSEMBLY

## H. Keypad Assembly Part Reference

**RPAP-KEYPAD-ML: Replacement Keypad for Manual Lifter**

**RPAP-KEYPAD-EL: Replacement Keypad for Electric Lifter**

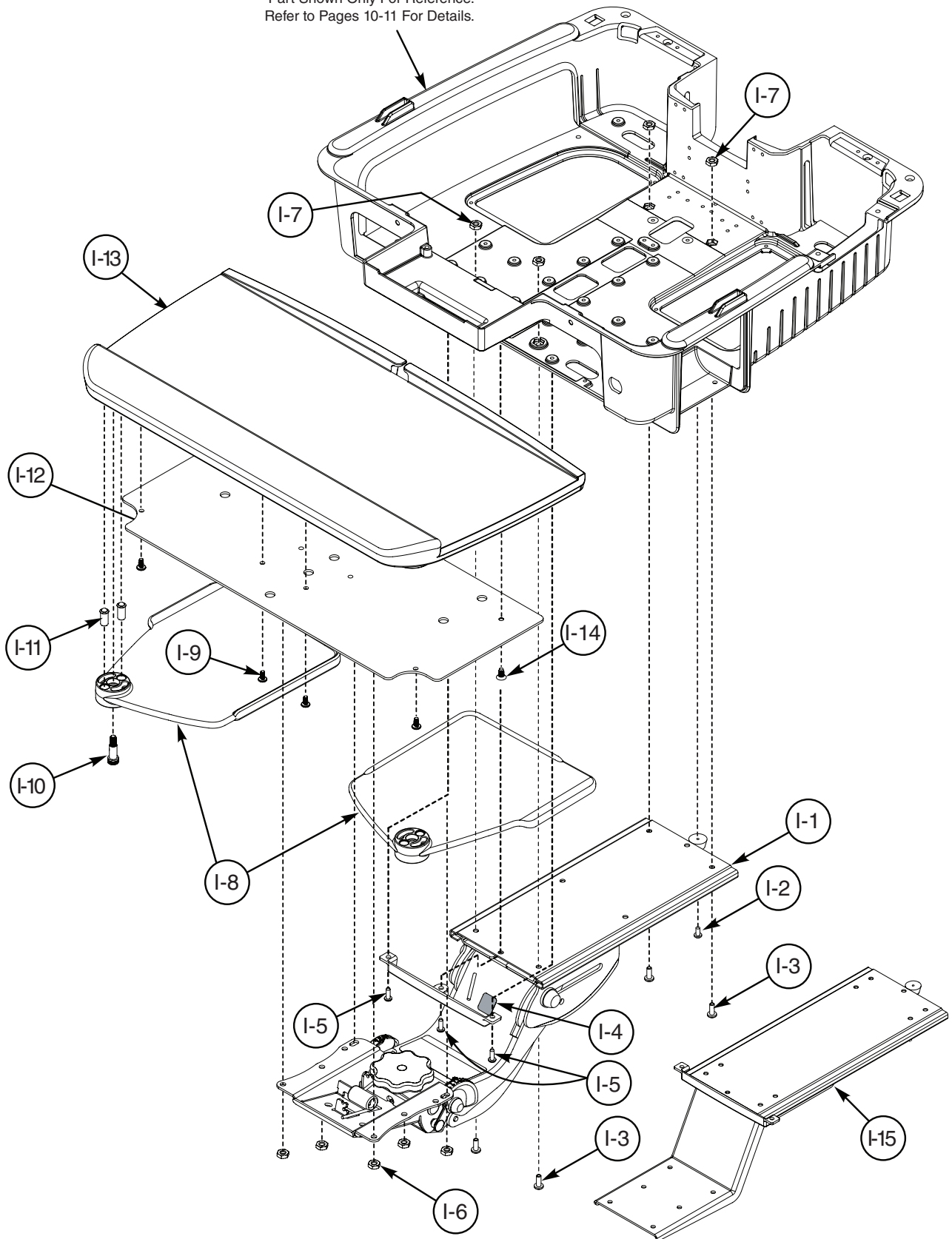
**RPAP-LTKEYPAD-ML: Replacement Laptop Keypad for Manual Lifter**

Index #	Description	Quantity	Reference No.
H-1	Keypad Connections Diagram Label	1	C05-1126
H-2	Touch Screen Bezel Top	1	AP-BEZELTOP
H-3	Keypad Gasket	1	C08-021
H-4	Keypad Overlay Manual Lift	1	C05-1220
	Keypad Overlay Electric Lift	1	C05-1219
	Keypad Overlay Laptop Cart Manual Lift	1	C05-1222
H-5	Keypad Daughter PCB Carrier	1	AP-PCBCARRIER
H-6	Keypad Mount Bottom Cover	1	AP-BEZELFRAME
H-7	#8 Flat Washer (RoHS)	6	F06-097
H-8	PPH #6-32 x .1875" Long Screw	14	F04-342
H-9	#6-32 x 1" Long Flat Phillips Head Screw	4	F04-530
H-10	PCB Keypad Main Board Assembly	1	C13-867
H-11	Keypad Main to Daughter Board Wire Harness	1	C13-922
H-12	PCB Keypad Daughter Board Assembly	1	C13-941
H-13	Spring Bearing	2	32069

# I. KEYBOARD TRAY ASSEMBLY

Refer to Page 19 for Replacement Part Numbers, Descriptions and Quantities

Part Shown Only For Reference.  
Refer to Pages 10-11 For Details.



**FIGURE I: KEYBOARD TRAY ASSEMBLY**

## I. Keyboard Tray Assembly Part Reference

### RPAP-KEYBOARDARM-ERGO: Replacement Keyboard Arm Assembly, Ergonomic

Index #	Description	Quantity	Reference No.
I-1	Keyboard Arm	1	C21-191
I-2	PPH 8 x 3/8" Sheet Metal Screw	1	F04-030A
I-3	PPH 10-24 x 1/2 Screw	4	F04-219
I-4	Label, Warning Symbol	1	608981-1
I-5	PPH 8-32 x .500 Thread Cutting Screw	3	F04-224
I-6	10-24 HEX Nylon Lock Nut	6	F02-041*

### RPAP-KEYBOARDARM-S: Replacement Keyboard Arm Assembly, Simple

Index #	Description	Quantity	Reference No.
I-15	Sliding Keyboard Arm	1	C21-246
I-2	PPH 8 x 3/8" Sheet Metal Screw	1	F04-030A
I-3	PPH 10-24 x 1/2 Screw	4	F04-219
I-5	PPH 8-32 x .500 Thread Cutting Screw	3	F04-224
I-6	10-24 HEX Nylon Lock Nut	6	F02-041*

### RPAP-KEYBOARDTRAY-ERGO: Replacement Keyboard Tray Assembly, Ergonomic

Index #	Description	Quantity	Reference No.
I-7	10-24 HEX Nylon Lock Nut	4	F02-041*
I-8	Mouse Pad	2	AP-MOUSEPAD
I-9	PPH #10 x .375 Screw (with Both Phillips and Slotted Drive)	4	F04-501
I-10	5/16" Dia Arm, 5/8" L Shoulder, 1/4-20 Thread Shoulder Bolt	2	F04-473
I-11	Press Fit Spring Plunger, .312 OD, 8-16 Nose Force	4	F07-148
I-12	Keyboard Tray Stiffener Bracket	1	C09-1125
I-13	Keyboard Tray	1	AP-KEYBRDTRAY
I-14	#10-14 x 3/4" Length Flat Head Phillips Drive Screw	4	F04-587

### RPAP-KEYBOARDTRAY-S: Replacement Keyboard Tray Assembly, Simple

Index #	Description	Quantity	Reference No.
I-8	Mouse Pad	2	AP-MOUSEPAD
I-9	PPH #10 x .375 Screw (with Both Phillips and Slotted Drive)	4	F04-501
I-10	5/16" Dia Arm, 5/8" L Shoulder, 1/4-20 Thread Shoulder Bolt	2	F04-473
I-11	Press Fit Spring Plunger, .312 OD, 8-16 Nose Force	4	F07-148
I-12	Keyboard Tray Stiffener Bracket	1	C09-1126
I-13	Keyboard Tray	1	AP-KEYBRDTRAY
I-14	#10-14 x 3/4" Length Flat Head Phillips Drive Screw	4	F04-587

### RPAP-KEYBOARDHW: Replacement Keyboard Hardware Kit

Index #	Description	Quantity	Reference No.
I-5	PPH 8-32 x .500 Thread Cutting Screw	3	F04-224
I-3	PPH 10-24 x 1/2 Screw	4	F04-219
I-6	10-24 HEX Nylon Lock Nut	4	F02-041*

Index #	Description	Quantity	Reference No.
I-9	PPH #10 x .375 Screw (with Both Phillips and Slotted Drive)	8	F04-501

# J. COLUMN ASSEMBLY

Refer to Pages 21-22 for Replacement Part Numbers, Descriptions and Quantities

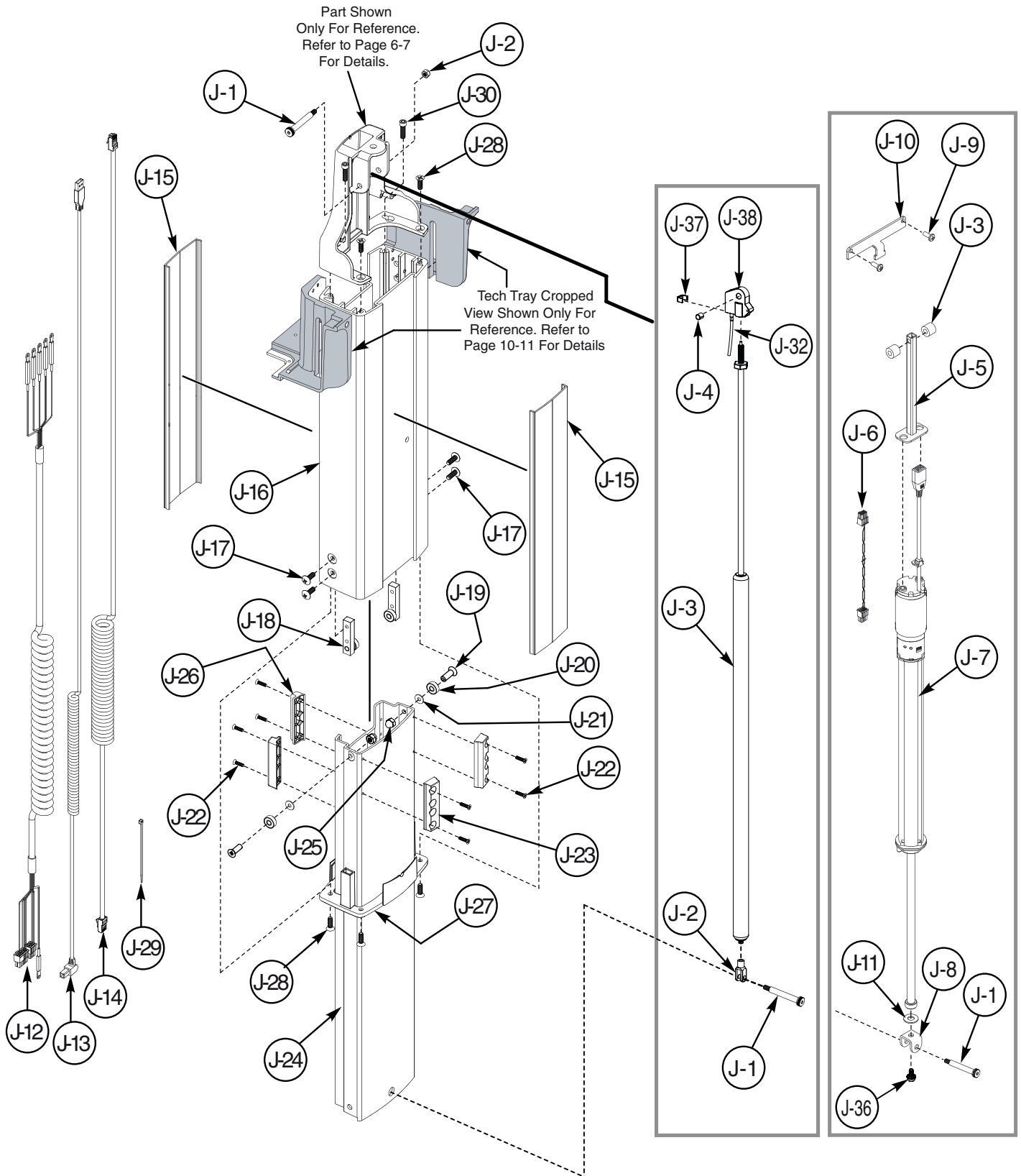


FIGURE 4: COLUMN ASSEMBLY

## J. Column Assembly Part Reference

RPAP-EASYLIFT-130N: Replacement, Easy Lift Gas Spring Kit, 130 Newton

RPAP-EASYLIFT-170N: Replacement, Easy Lift Gas Spring Kit, 170 Newton

RPAP-EASYLIFT-210N: Replacement, Easy Lift Gas Spring Kit, 210 Newton

RPAP-EASYLIFT-250N: Replacement, Easy Lift Gas Spring Kit, 250 Newton

RPAP-EASYLIFT-290N: Replacement, Easy Lift Gas Spring Kit, 290 Newton

RPAP-EASYLIFT-330N: Replacement, Easy Lift Gas Spring Kit, 330 Newton

RPAP-EASYLIFT-370N: Replacement, Easy Lift Gas Spring Kit, 370 Newton

RPAP-EASYLIFT-410N: Replacement, Easy Lift Gas Spring Kit, 410 Newton

RPAP-EASYLIFT-450N: Replacement, Easy Lift Gas Spring Kit, 450 Newton

RPAP-EASYLIFT-490N: Replacement, Easy Lift Gas Spring Kit, 490 Newton

Index #	Description	Quantity	Reference No.
J-1	M6 x 1 x 11mm Shoulder Screw, 8mm Dia, 50mm Length	2	F01-033
J-2	M8 Clevis Without Clip Bolt	1	F07-169
J-3	Adjustable Gas Spring (130N to 490N)	1	C10-050-430
J-4	8mm ID x 10mm OD x 12mm Steel Bearing Sleeve	1	C01-020
J-37	Bowden Wire Fastener	1	F07-179
J-38	Release Head Gas Spring	1	C11-890

### RPAP-ELIFTER: Replacement Electric Lifter Assembly

Index #	Description	Quantity	Reference No.
J-1	M6 x 1 x 11mm Shoulder Screw, 8mm Dia, 50mm Length	2	F01-033
J-2	M6 x 1, Nylock Jam Nut	1	F02-136
J-3	Nylon Spacer, ID Ø8.3mm, OD Ø12mm, L 15mm	2	C06-1101
J-5	Actuator Top Mounting Bracket	1	C09-934
J-6	Lifter Power Cable	1	C13-970
J-7	Actuator	1	C13-967
J-8	Actuator Bottom Mounting Bracket with Spline	1	C09-1132
J-9	PPH 10-24 x 1/2 Screw	2	F04-219
J-10	Stabilizer Bracket	1	C09-1017
J-11	5/16 Flat Washer (RoHS)	1	90004215
J-36	M5 x 0.8-10mm Socket Head Cap Screw	1	F04-555

### RPAP-ELIFTER-UBRKT: Replacement E-Lifter Bottom Bracket

Index #	Description	Quantity	Reference No.
J-8	Actuator Bottom Mounting Bracket with Spline	1	C09-1132
J-11	5/16 Flat Washer (RoHS)	1	90004215
J-36	M5 x 0.8-10mm Socket Head Cap Screw	1	F04-555

### RPAP-COLUMNSTRIP: Replacement Column Strip Kit

Index #	Description	Quantity	Reference No.
J-15	Column Accent Strip	1	C06-1106

### RPAP-USBCAT5CABLE: Replacement USB CAT5e Coiled Cable Kit



Index #	Description	Quantity	Reference No.
J-13	CAT5e Coiled Cable	1	C13-908
J-14	USB Coiled Cable	1	C13-909

**RPAP-DCPOWERCABLE: Replacement DC Power Cable Kit**

Index #	Description	Quantity	Reference No.
J-12	DC Power Cable	1	C13-910

Index #	Description	Quantity	Reference No.
J-16	Top Column	1	A11-139
J-17	1/4-20 x 3/4 Phillips Truss Head Screw	4	F04-068*
J-18	Bearing Carrier Assembly	2	C01-018
J-19	1/4-20 x .875" Flat Head Phillips Drive with Nylock Patch 18-8 Stainless Screw	2	F04-557
J-20	Ball Bearing (.687 OD x .250 ID x .250 Thick)	2	C01-017
J-21	1/4" Split Lock Washer Zinc Plated	2	F06-021
J-22	PFH 8-32 x .625 Screw	8	F04-503
J-23	Rear Slider Column	2	AP-SLIDEBUSHBK
J-24	Bottom Column	1	A11-138
J-25	1/4-20 Acorn Nut	2	F02-073
J-26	Front Slider for Column	2	AP-SLIDEBUSHFT
J-27	Column Collar	1	AP-COLUMNCOLLAR
J-28	PFH 1/4-20 x .750 Long Screw	6	F04-336
J-29	Nylon Cable Tie, 4 Inches (RoHS)	4	90010104
J-30	1/4-20 x .875 Socket Head Cap Screw	2	F04-507
J-32	Release Cable 29.5" (750mm)	1	C11-910

## K. REAR HANDLE ASSEMBLY (ACCESSORY)

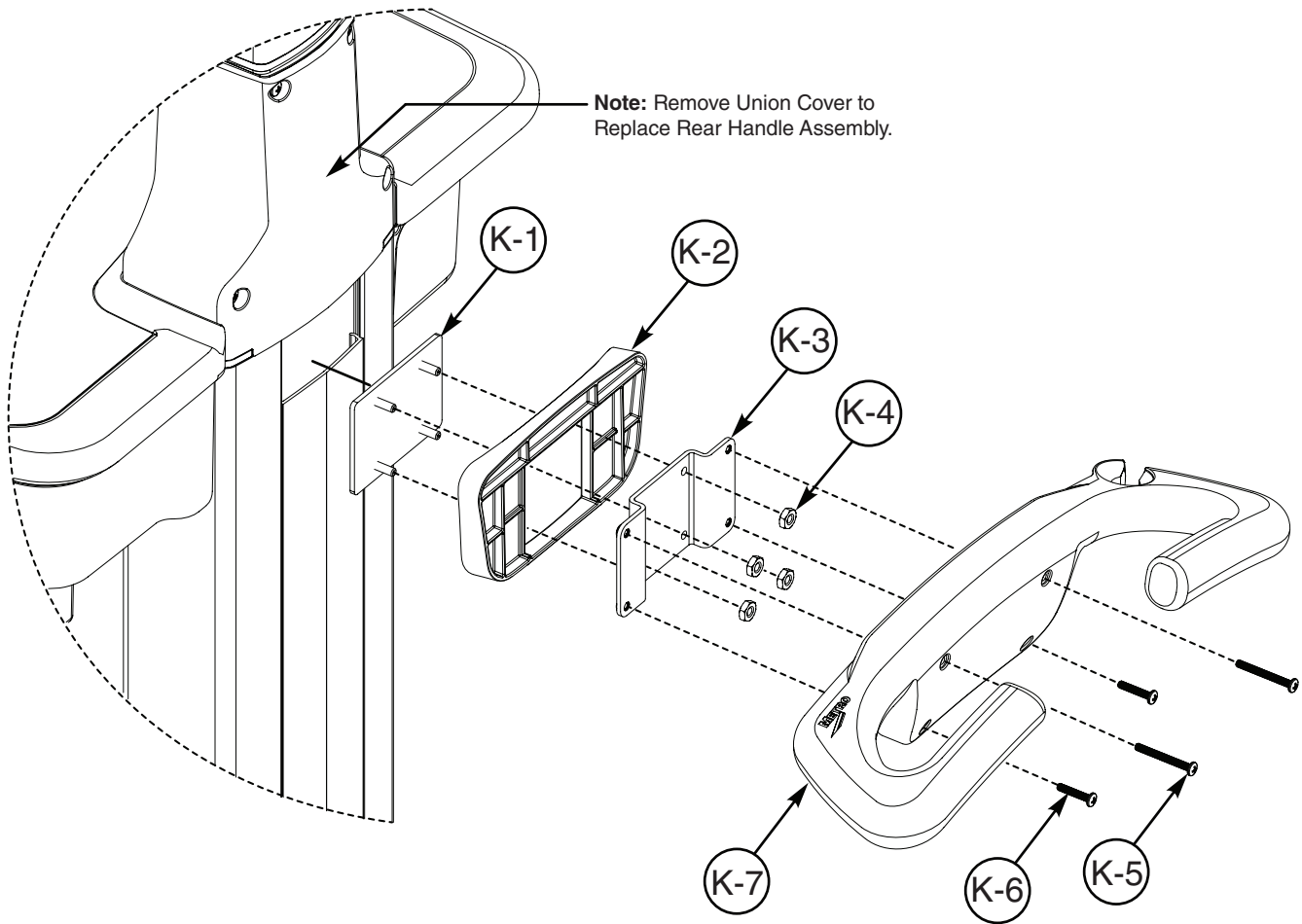


FIGURE K: REAR HANDLE ASSEMBLY

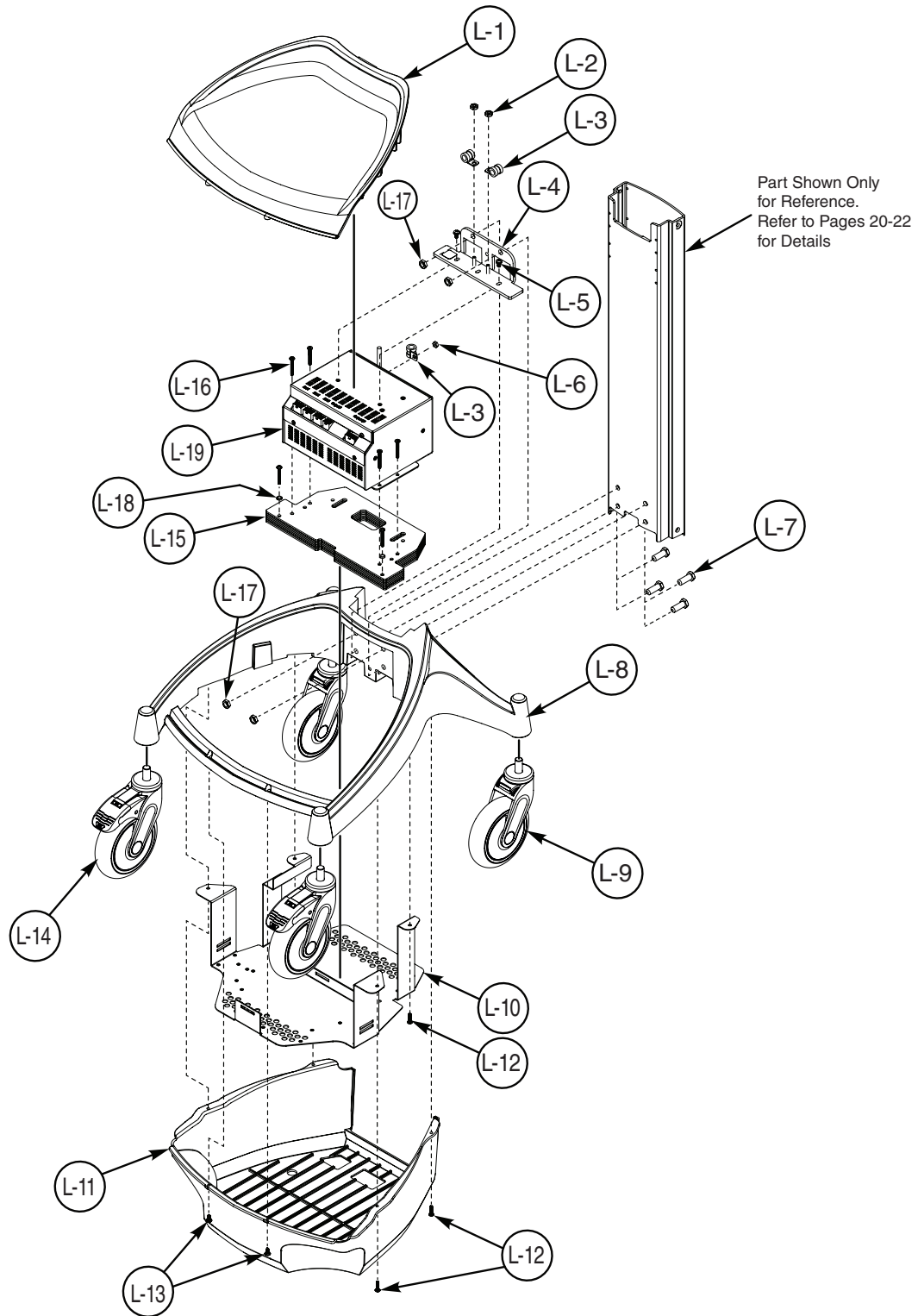
### *K: Rear Handle Assembly Part Reference*

#### RPAP-HANDLE: Replacement Back Handle Kit

Index #	Description	Quantity	Reference No.
K-1	Column Insert with 4 Mountings Assembly	1	C09-849
K-2	Back Handle Adaptor	1	AP-HANDLEADPTR
K-3	Handle Adaptor Bracket Assembly	1	C09-833
K-4	10-24 Hexagonal Nylon Lock Nut	4	F02-041*
K-5	PPH #8-32 x 1.5" Long Screw	2	F04-510
K-6	PPH #8-32 x .75" Long Screw	2	F04-509
K-7	Back Handle	1	AP-HANDLE

# L. BASE ASSEMBLY

Refer to Page 25 for Replacement Part Numbers, Descriptions and Quantities



NOTE: Battery Kits Available in SLA & Li-Nano Versions.  
See Pages 26-27 for More Information.

FIGURE L: BASE ASSEMBLY

## L. Base Assembly Part Reference

### RPAP-BASE: Replacement Base Assembly

Index #	Description	Quantity	Reference No.
L-1	Base Plastic Top	1	AP-BASETOP
L-2	10-24 Hexagonal Nylon Lock Nut	2	F02-041*
L-3	.375 Steel Clamp (RoHS)	3	90010206
L-4	Power Unit Mounting Bracket Assembly	1	C09-842
L-5	10-32 x 3/8 Phillips PAN Screw (RoHS)	2	F04-386
L-6	#8-32 Elastic Lock Nut	1	F02-084
L-7	5/16-18 x 1 Hexagonal Head Screw	4	F04-095*
L-8	AccessPoint Base	1	C03-035
L-9	5" Swivel Caster, Blue	2	C02-390
L-10	Base Support Assembly	1	C09-827
L-11	Base Plastic Bottom	1	AP-BASEBTM
L-12	PPH 8-32 x .625 Screw	6	F04-384
L-13	8-16 x 1/2 Phillips Pan Plastite Screw	2	F04-477
L-14	5" Total Lock Caster, Blue	2	C02-391
L-15	Ballast	7	C09-826
L-16	PPH #8-32 x 1.25 Screw	6	F04-500
L-17	5/16-18 Elastic Stop Nut	4	F02-028
L-18	#8 Split Lock Washer, 18-8 Stainless Steel	2	F06-109
	Ground Straps w/ ESD Sleeve and Dowel Pin (not shown)	1	404109-7

### RPAP-POWERSUPPLY: Replacement Power Supply

Index #	Description	Quantity	Reference No.
L-19	Power Electronics MPS-4010 (No Battery)	1	C13-885-04

### RPAP-BASEBOTTOM: Replacement Base Bottom Cover

Index #	Description	Quantity	Reference No.
L-11	Base Plastic Bottom	1	AP-BASEBTM
L-12	PPH 8-32 x .625 Screw	6	F04-384
L-13	8-16 x 1/2 Phillips Pan Plastite Screw	2	F04-477

### RPAP-5CASTERNL: Replacement 5" Caster Swivel No Lock, Blue

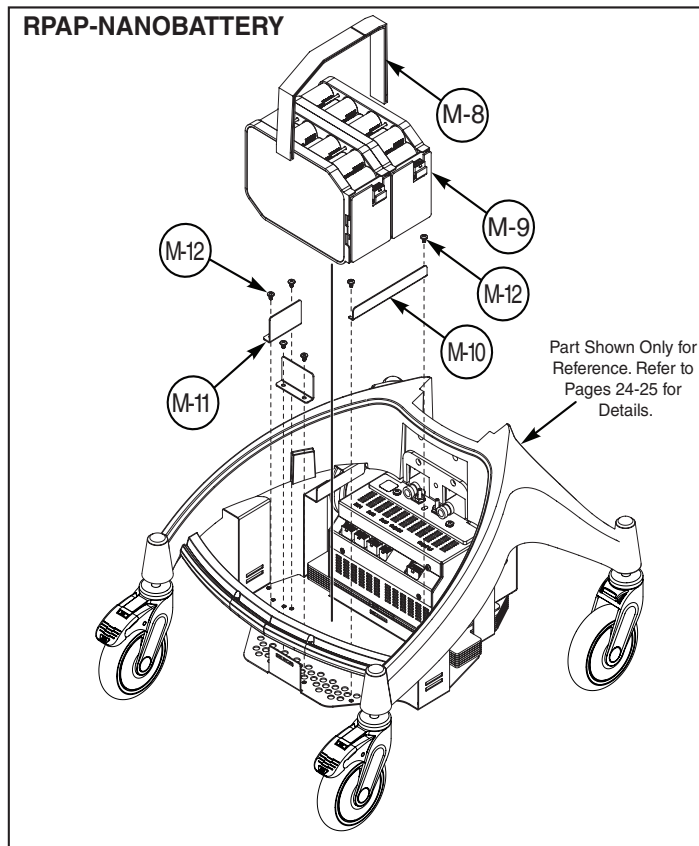
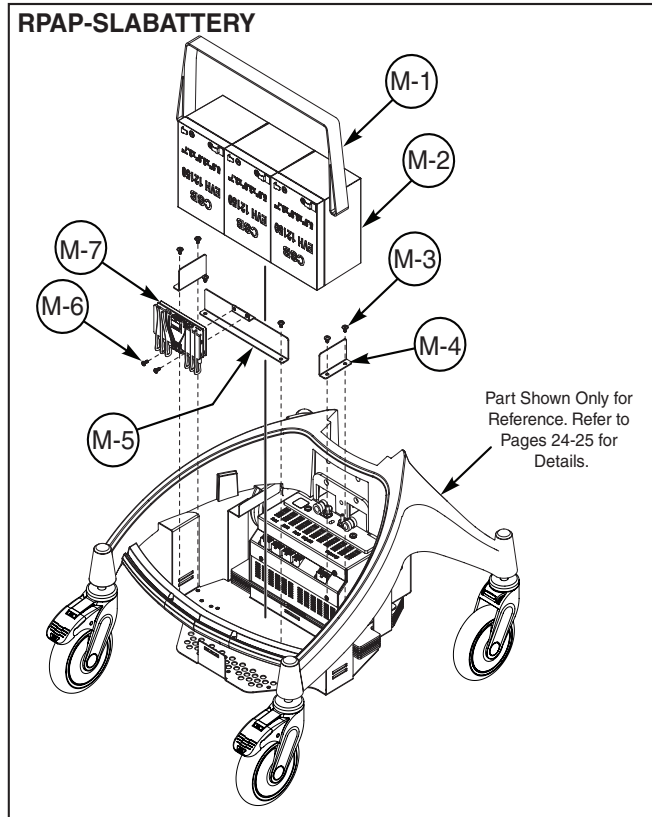
Index #	Description	Quantity	Reference No.
L-9	5" Swivel Caster, Blue	1	C02-390

### RPAP-5CASTERLK: Replacement 5" Caster Total Lock, Blue

Index #	Description	Quantity	Reference No.
L-14	5" Total Lock Caster, Blue	1	C02-391

# M. BATTERY ASSEMBLY

Refer to Page 27 for Replacement Part Numbers, Descriptions and Quantities



**FIGURE M: BATTERY ASSEMBLY**

## *M. Battery Assembly Part Reference*

### **RPAP-SLABATTERY: Replacement SLA Battery**

Index #	Description	Quantity	Reference No.
M-1	36" Velcro Strap	1	36078
M-2	SLA Battery,12 V 15 Ah	3	C13-739
M-3	PPH 8-32 x .250 Screw	6	F04-207
M-4	Battery Bracket	2	C09-830
M-5	SLA Gas Gauge Bracket with Fastener Assembly	1	C09-831
M-6	PPH 6-32 x .3125 Machine Screw (RoHS)	2	F04-379
M-7	SLA Battery Kit (PCB & Cable Assemblies)	1	C13-905

### **RPAP-NANOBATTERY: Replacement Li-Nano Battery**

Index #	Description	Quantity	Reference No.
M-8	36" Velcro Strap	1	36078
M-9	Li-Nano Battery Pack, 264 Wh	2	C13-728
M-10	Li-Nano Battery Bracket	1	C09-986
M-11	Battery Bracket	2	C09-830
M-12	PPH 8-32 x .250 Screw	6	F04-207

## OTHER REPLACEMENT PARTS

### Monitors

Part #	Description	Reference No.
RPMON-PLANAR-22	Replacement LED Monitor Planar 22 Inch	C13-602
RPMON-IIYAMA-22	Replacement LED Monitor Iiyama 22 Inch	C13-535
RPMON-IIYAMA-22TS	Replacement Touchscreen Monitor Iiyama 22 Inch	C21-151
RPMON-IIYAMA-24	Replacement LED Monitor Iiyama 24 Inch	C13-981

### Monitor Cables

Part #	Description	Reference No.
RPCABLE-IIYAMA	Replacement Iiyama Power Cable	400677-1
RPVGACABLE-6	Replacement VGA Cable 6 Ft	400926-1
RPDVICABLE-6	Replacement DVI Cable 6 Ft	400969-1

### Keyboards

Part #	Description	Reference No.
RPKBBACKLIT-US	Replacement Keyboard Backlit	402292
RPKBUSLIM-US	Replacement Keyboard Ultra Slim	C13-702
RPKBBCWASH-US	Replacement B Cool Keyboard Washable	C13-637
RPKBSSWASH-US	Replacement Seal Shield Keyboard Waterproof	C13-727

### Keyboard Covers

Part #	Description	Reference No.
RPKBBACKLIT-COVER	Replacement Keyboard Cover Waterproof	402315
RPKBUSLIM-COVER	Replacement Keyboard Cover Ultra Slim	C13-703

### Mice

Part #	Description	Reference No.
RPMOUSE	Replacement Optical Mouse USB	401495
RPMOUSEWASH	Replacement Washable Mouse	C13-697
RPMOUSEPOCKET	Replacement Mouse Pocket	608050-1

### USB Hubs

Part #	Description	Reference No.
RPUSBHUB4	Replacement Four Port USB Hub	C13-817
RPAP-USBHUB-POWER	Replacement Powered USB Hub	C13-817

### 8ft AC Power Cords

Part #	Description	Reference No.
RPACPOWERCORD8-AN	Replacement 8 ft AC Power Cord, Aus/NZ	C13-686
RPACPOWERCORD8-EU	Replacement 8 ft AC Power Cord, EU	C13-1030
RPACPOWERCORD8-SW	Replacement 8 ft AC Power Cord, Swiss	C13-658
RPACPOWERCORD8-UK	Replacement 8 ft AC Power Cord, UK	C13-657



## 12ft AC Power Cords

Part #	Description	Reference No.
RPACPOWERCORD12-US	Replacement 12 ft AC Power Cord, US	C13-677
RPACPOWERCORD12-AN	Replacement 12 ft AC Power Cord, Aus/NZ	C13-691
RPACPOWERCORD12-EU	Replacement 12 ft AC Power Cord, EU	C13-1093
RPACPOWERCORD12-SW	Replacement 12 ft AC Power Cord, Swiss	C13-690
RPACPOWERCORD12-UK	Replacement 12 ft AC Power Cord, UK	C13-689

## Adapters

Part #	Description	Reference No.
RPADPT-EU	Replacement Schuko Ground Pin Converter	C13-953
RPADPT-UNIV	Replacement Universal AC Plug Adapter	C13-1083
RPADPT-3CUBE	Replacement Triple Cube Adapter	C13-1082
RPADPT-YSPLIT	Replacement Splitter AC Power Adapter	C13-1081
RPADPT-HDMIDVI	Replacement Adapter HDMI to DVI	C13-725
RPADPT-DISPDVI	Replacement Adapter Display to DVI	C13-863
RPADPT-MINIDVI	Replacement Adapter Mini Display to DVI	C13-946

## Other Cables

Part #	Description	Reference No.
RPPOWERCABLE-12	Replacement Power Cable 2.5 x 5.5 x 12	402384
RPPOWERCABLE-HP	Replacement Power Cable 7.4 x 5.0 x 3.5	C13-781
RPAP-POWERCABLE	Replacement Computer Power Cable	C13-897
RPCABLE-RJ45-2	Replacement 2ft RJ45 Cable	607734-2

## **CUSTOMER SERVICE**

### ***TouchPoint Medical Contact Information***

***TouchPoint Medical  
114 Douglas Road East  
Oldsmar, FL 34677  
<http://www.touchpointmed.com/support>***

### ***TouchPoint Medical Customer Service***

**For all other customer service related issues, or if you need technical assistance, please call our customer service department at:**

***1-800-947-3901***